



| | | | |
|------|-----------------------|---------|------|
| REV. | ECN NO OR DESCRIPTION | REVISED | DATE |
| | | | |

A

B

C

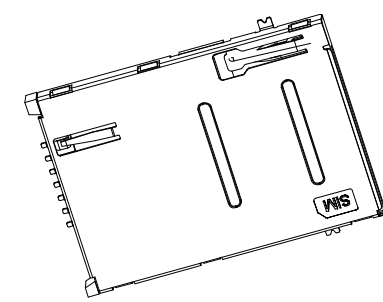
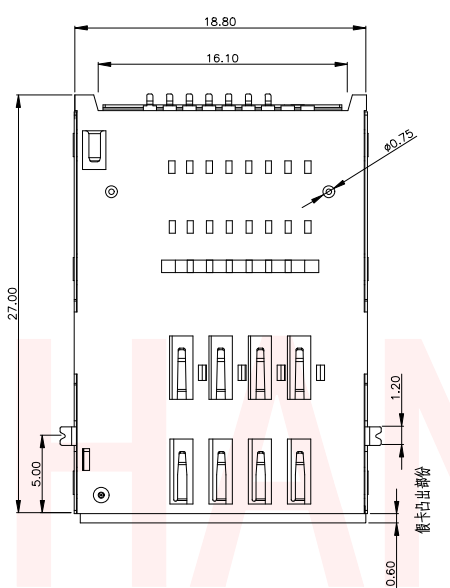
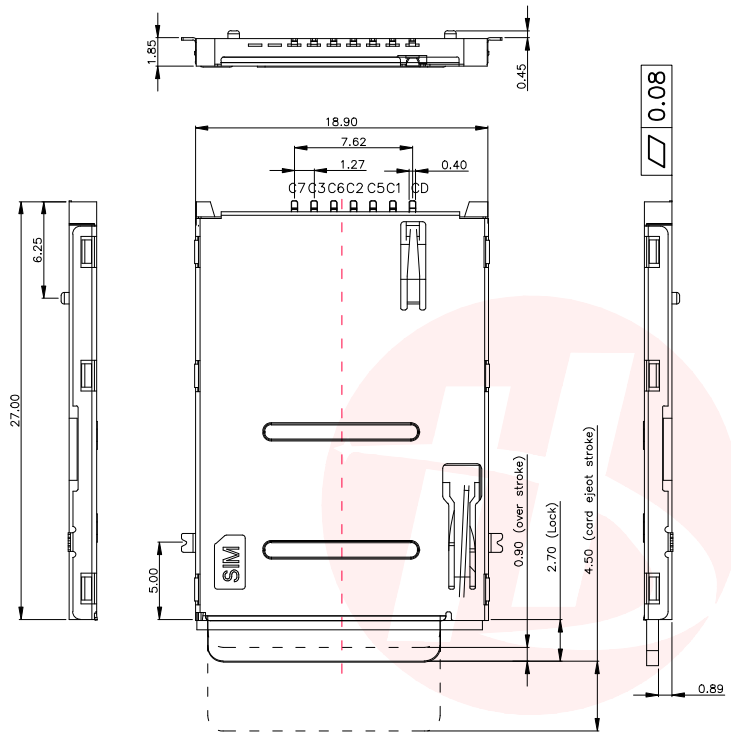
D

A

B

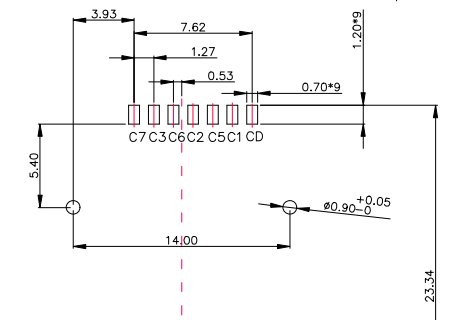
C

D

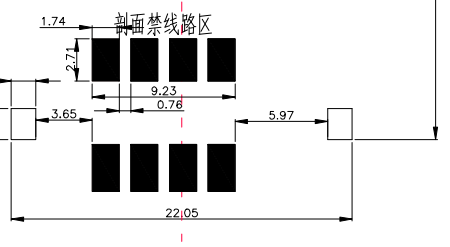
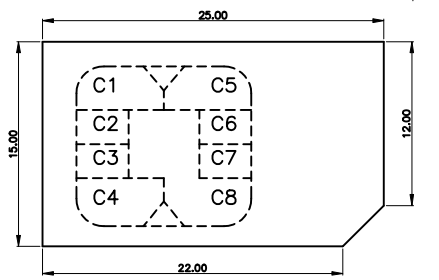
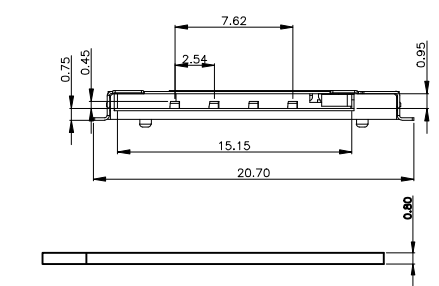
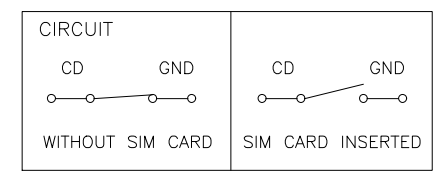


- Notes:
- Material:
 - Housing: LCP Color: black (塑胶材质: LCP 94-V0 黑色)
 - Contact: Phosphor Bronze. (端子材质: 磷青铜)
 - SHELL: SUS (外壳材质: 不锈钢)
 - All Ni30u" Min Contact 1u", solder area Tin 30u/min (全部镀层30u", 接触点1u", 焊接处镀30u")
 - shell Ni 30" min ,solder gold Flash (镀层30"u, 焊接处镀金)

- SPECIFICATION:
- DURABILITY: 5000 CYCLES MIN (寿命: 5000次最小)
 - CURRENT: 0.5A (额定电流: 0.5Amps)
 - VOLTAGE: 40V MAX (额定电压: 40V最大)
 - WITHSTANDING VOLTAGE: 500V AC MIN. (UNMATED) (额定电压: 500V AC 最小)
 - CONTACT RESISTANCE: 30mΩ MAX. (端子接触电阻: 30mΩ最大)
 - INSULATION RESISTANCE: 1000MΩ MIN. (UNMATED) (绝缘电阻: 1000兆欧最小)
 - OPERATING TEMPERATURE RANGE: -40.C TO +85.C (工作温度: -40度到+85度)
 - ALL THE MATERIAL SHOULD COMPLY WITH THE ROHS (全部材质符合ROHS)



| pin no. | name |
|---------|------------|
| C1 | vcc of sim |
| C2 | rst of sim |
| C3 | clk of sim |
| C5 | gnd of sim |
| C6 | vpp of sim |
| C7 | I/O of sim |
| C4/C8 | n/a |



RECOMMENDED PCB LAYOUT
GENERAL TOLERANCE ±0.05

UNLESS OTHERWISE SPECIFIED TOLERANCES

| | |
|------------|---------|
| DECIMALS: | ANGLES: |
| X ±0.5 | X ±2° |
| X.X ±0.20 | X.X ±1° |
| X.XX ±0.10 | |

东莞市汉博电子科技有限公司
DONGGUAN HANBO TECHNOLOGY CO., LTD

| | | | |
|---------------|-----------------------------|------------|--------------|
| TITLE | MINI SIM PUSH 6P+1P 有柱右开关后脚 | | |
| DWN | xiong | SIM-210 | |
| CHKD | lee | SCALE: 1:1 | UNIT: mm |
| APVD | wang | SIZE: A4 | SHEET: 10F 1 |
| | | REV: A4 | |
| CUSTOMER COPY | | | |